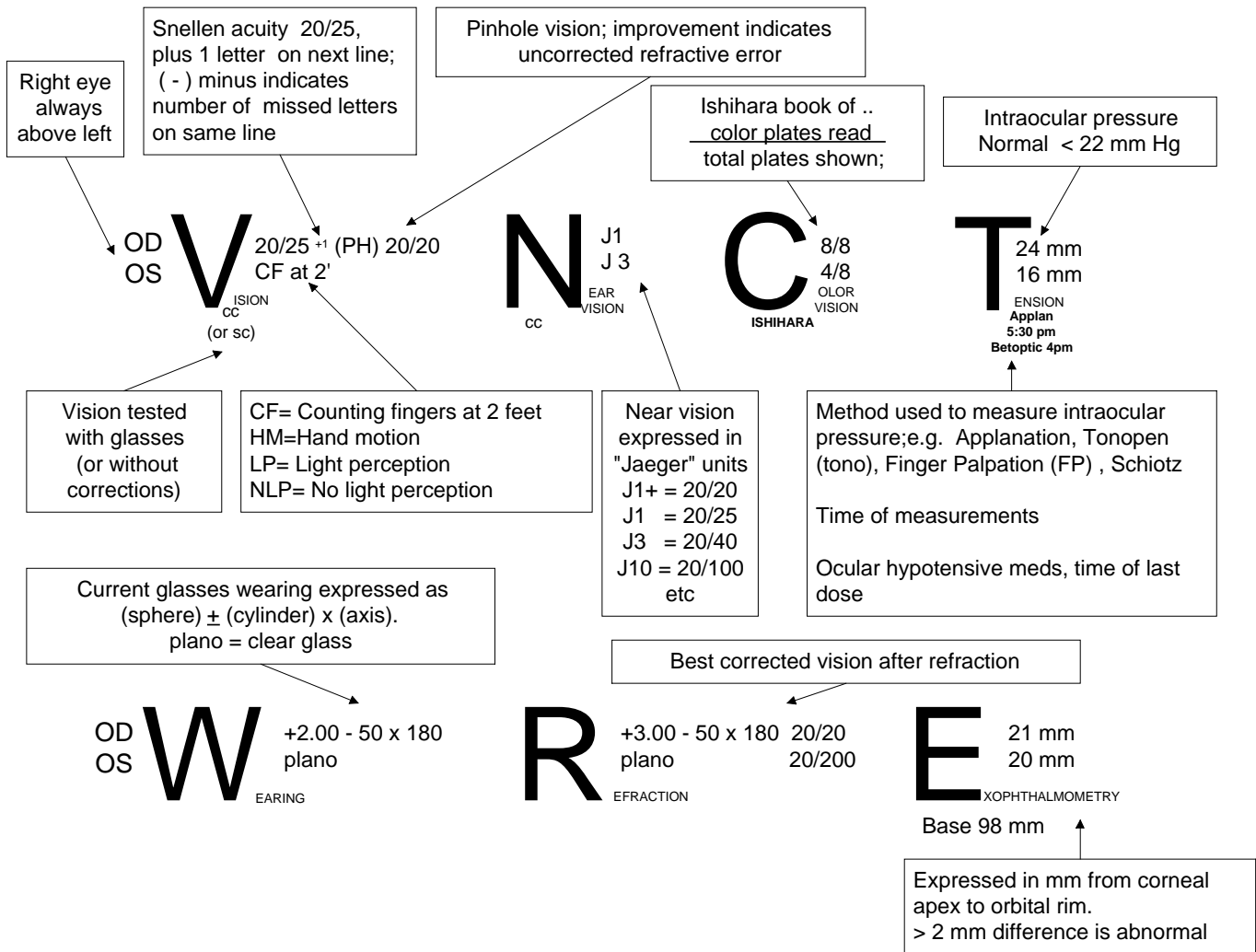


HIEROGLYPHICS OF THE EYE EXAM



LIDS: LF = lid fissure

MRD= lid margin to corneal reflex distance (to quantitate ptosis in)

PUPILS: APD = afferent pupillary defect

SLE: (SLIT LAMP EXAMINATION)

CONJ: (CONJUNCTIVA)

CORNEA: (K)

A/C: (ANTERIOR CHAMBER)

IRIS: PI = peripheral iridectomy

LENS: PSC= posterior subcapsular cataract,

NS= nuclear sclerotic cataract

GRADING CATARACT DENSITY : 1+ (mild) to 4+(severe)

PC IOL = Posterior chamber intraocular lens,

AC IOL = Anterior Chamber IOL

MOTILITY:

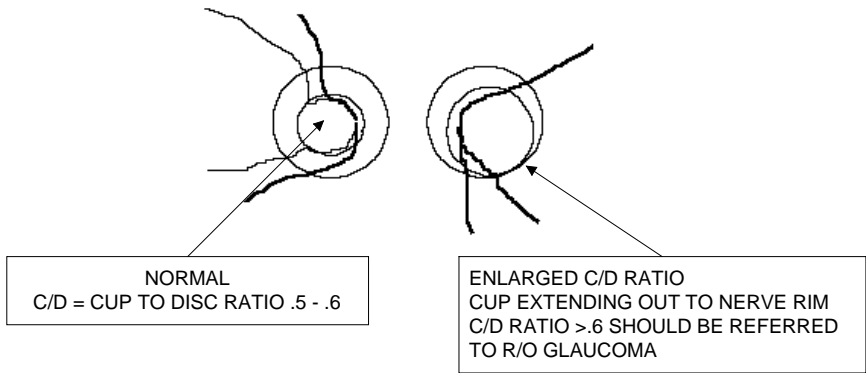
- **OCULAR MISALIGNMENT EXPRESSED IN PRISM DIOPTERS (PD)**
1 PD = light displaced by 1cm at 1 m
- **PHORIA** is a latent misalignment
- **TROPIA** is a manifest misalignment.
- **NOTATION USED TO QUANTITATE MISALIGNMENT:**
 1. **ORTHO** = both eyes aligned : EX = 0
 2. **AT DISTANCE** -
 - a. **ESODEVIATIONS** (eyes crossed)
E = esophoria, ET = esotropia
 - b. **EXODEVIATIONS**
X = exophoria, XT= exotropia
 - c. **HYPERDEVIATIONS** (one eye higher relative to the other; by convention lateralize to the upper eye even if the lower eye is abnormal)
RH = right hyperphoria, RHT = right hypertropia
LH = left hyperphoria, LHT = left hypertropia
 3. **AT NEAR**
prime indicates measure at near e.g. ET', X', LHT'

4. *Example: Grid shows misalignment in patient's cardinal positions of gaze i.e. 12 prism diopters of left hypertropia in right gaze, 2 prism diopters of left hyperphoria in left gaze, etc. This particular example demonstrates an inconstant vertical misalignment that worsens when looking down and to the right which is typical of a IV nerve palsy.*

	RIGHT	LEFT	
		2 LHT 2 XT	↑ UP
	12 LHT	4 LHT	1°
	16 LHT	5 LHT 4 ET	DOWN

FUNDUS EXAMINATION : (dilated; undilated)

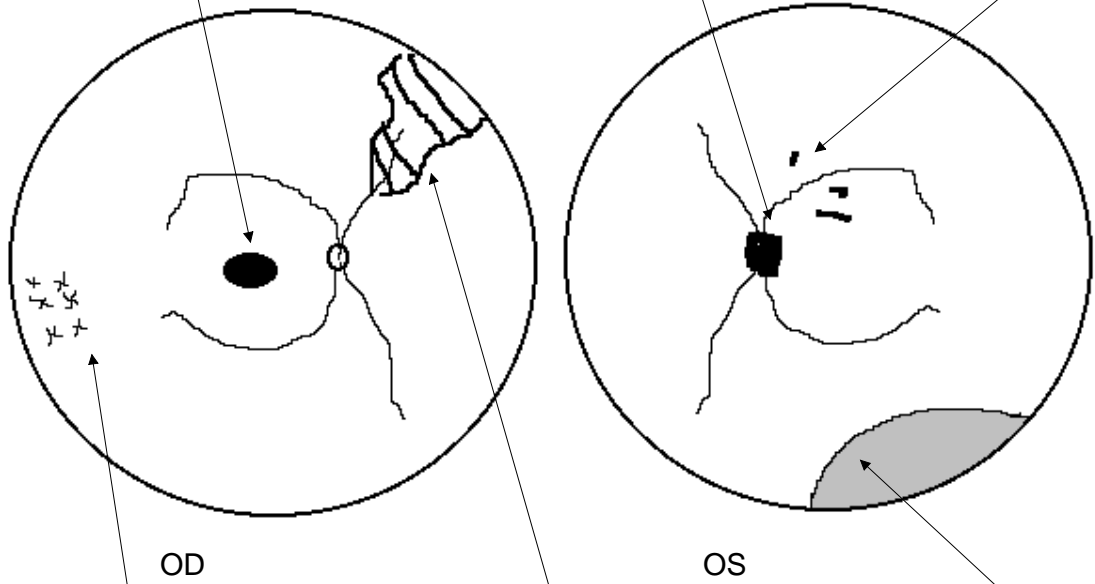
Diagrams are often used to document fundus findings. Examples of common abbreviations and notations used to document a variety of abnormalities are shown below.



SRF = SUBRETINAL FLUID
PED = PIGMENT EPITHELIAL DETACHMENT
SRNV = SUBRETINAL NEOVASCULAR MEMBRANE
ARMD = AGE RELATED MACULAR DEGENERATION
TRD = TRACTION RETINAL DETACHMENT
CSME = CLINICALLY SIGNIFICANT MACULAR EDEMA

ODE = OPTIC DISC EDEMA
OA = OPTIC ATROPHY
NVD = NEOVASCULARIZATION DISC

RETINAL HEMORRHAGES
CWS = COTTON WOOL SPOTS
HE = HARD EXUDATES
NVE = NEOVASCULARIZATION
ELSEWHERE
BDR = BACKGROUND DIABETIC
RETINOPATHY
PDR = PROLIFERATIVE DIABETIC
RETINOPATHY



LASER SCARS
LATTICE DEGENERATION
RETINAL HOLE

NECROTIZING RETINITIS
BRAO = BRANCH ARTERY OCCLUSION
BRVO = BRANCH VEIN OCCLUSION

RD = RETINAL DETACHMENT
WWP = WHITE WITHOUT PRESSURE

RETINAL SCHISIS
CILIOCHOROIDAL EFFUSION
MELANOMA